

峇里島4天

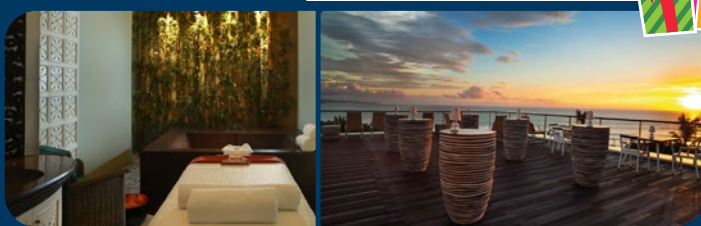
出發及完成入住日期 : 1/5 - 30/9/2018

CATHAY PACIFIC

GV2 "N" Class 2-7N

🔔 旺季及轉乘其他航班附加費, 請參閱網頁內相關國泰航空峇里島自悠行機票附加費表

Package Includes : ~ Roundtrip economy class air ticket from Hong Kong to Denpasar on Cathay Pacific
 ~ 3 nights accommodation with breakfast ~ Roundtrip transfer between airport and hotel



ADDED VALUE

- One-time Sunset Bites at Bene Rooftop for max. 2 persons
- One-time Buffet Dinner at Feast Restaurant for max. 2 persons



Min. 4 nights stay :

- Get the above added value and
- One-time 60 minutes massage at Shine Spa for max. 2 persons

Sheraton Bali Kuta Resort

www.sheratonbalikuta.com/

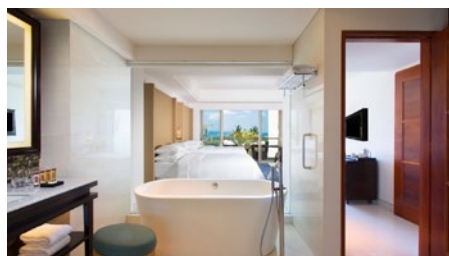
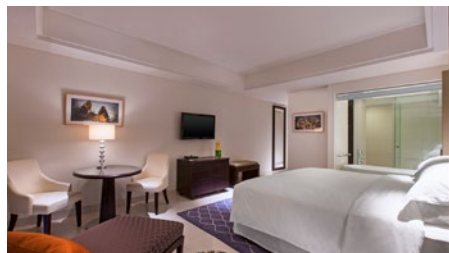


Located in Bali's most popular area, the Sheraton Bali Kuta resort's strategic location is only steps away from the famous Kuta Beach and its neighboring shopping districts.

ROOM TYPE	SHARE TWN	SINGLE ROOM	EXTENSION NIGHT
Deluxe <46sqm>	5599	7559	1360
Ocean View Suite <62sqm>	7599	11599	2720
Ocean Front Suite <100sqm>	8199	12799	3120
Extra Bed	5459		630

🔔 13-19/6, 15/7-15/8 surcharge \$350 per room night

↑ From Deluxe upgrade surcharge (per room night) :
 • to Deluxe Ocean View \$130
 • to Deluxe Ocean Front / Deluxe Ocean Facing \$300



備註:
 [1] 以上價目以每位計算, 乘坐國泰航空, booking class "N", 機票有效期3-7晚。
 最少2位成人方可成行, 使用電子機票。

[2] 所有已報名的客人必須同行, 不可缺一, 來回日期及航班必須相同,
 另所有客人必須同時辦理登機手續及於同一個 PNR BOOKING 內訂位。

[3] 小童佔半房或加床照成人佔半房或加床減收 \$750。

[4] PNR須註明住宿酒店名稱

"OSI : CX GV2 Fare IN (Date) OUT (Date) at XXX Hotel" must be shown in each booking made or changed.

Subject to booking cancellation if "OSI" element not append in PNR.

* 來回機票日期需與入住酒店之天數相同

注意事項:

[1] 所有價目及條款如有任何更改, 恕不另行通知, 恕不另行通知。

[2] 此套票須受本公司「報名及責任細則」「報名及責任細則」約束,
 詳情請瀏覽本公司網頁或向分行職員查詢。

[3] 航班資料僅供參考, 航空公司保留調動, 航空公司保留調動航班編號及時間之權利。

[4] 刊登圖片只供參考。



國泰 峇里島

自悠行機票附加費表

出發日期 : 21/4/2018 - 31/3/2019

只限20/4起之新訂位

出發日期		Booking Class			成人	小童
Economy						
Till 26/4, 29/4-12/6, 18/6-30/6		Q	3-7N	HKG - CX, KA - DPS - CX, KA - HKG	Less \$600	Less \$450
Till 21/12, 27/12-1/2, 8/2-31/3		N			照列表價	
Xmas	22/12-26/12	V			\$3560	\$2690
CNY	2/2-7/2	L			\$4060	\$2970
Premium Economy (available on selected flight only) ~ During rebooking, if Premium Economy class code is not available, please book N Class .						
Till 21/12, 27/12-1/2, 8/2-31/3		E	3-7N	HKG - CX - DPS - CX - HKG	\$1830	\$1370
Xmas	22/12-26/12				\$4160	\$3150
CNY	2/2-7/2				\$6190	\$4670
Business Class						
Till 21/12, 27/12-1/2, 8/2-31/3		I	2-7N	HKG - CX, KA - DPS - CX, KA - HKG	\$2590	\$1960
Xmas	22/12-26/12				\$6200	\$4770
CNY	2/2-7/2				\$9250	\$6970

Economy						
Till 26/4, 29/4-12/6, 18/6-30/6		Q	2-14N	HKG-CX, KA - DPS - CX, KA - HKG	Less \$90	Less \$60
Till 12/6, 18/6-21/12, 27/12-31/12		N			\$820	\$610
Till 21/12, 27/12-1/2, 8/2-31/3		S	2-14N	HKG-CX, KA - DPS - CX, KA - HKG	\$1890	\$1420
		V			\$3060	\$2310
Till 1/2, 8/2-31/3		L			\$3790	\$2860
Till 31/3		M	2N-1M		\$4380	\$3310

GV2
(min
2 ADT)

GV1